

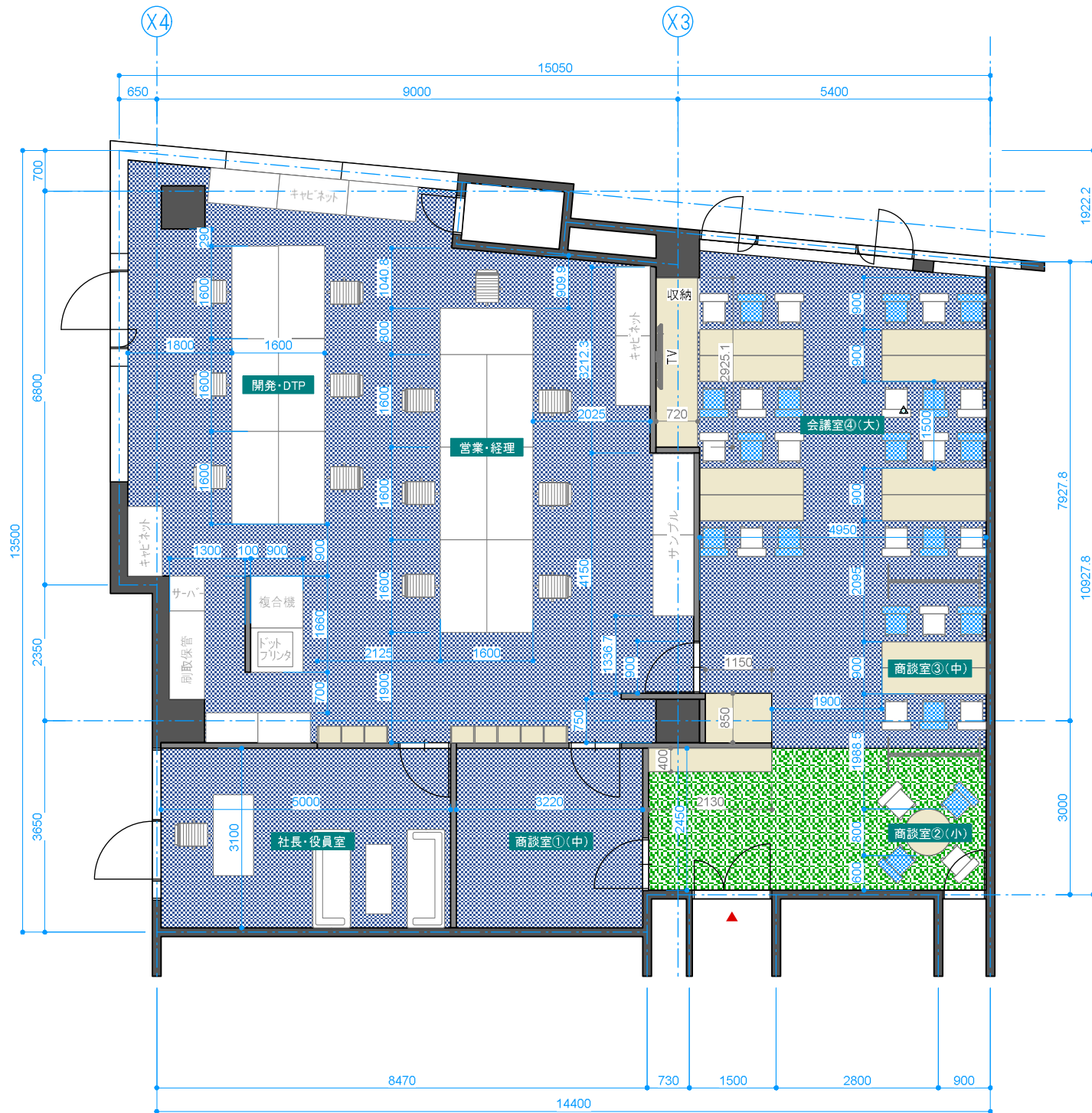
Kenbisha

OFFICE plan

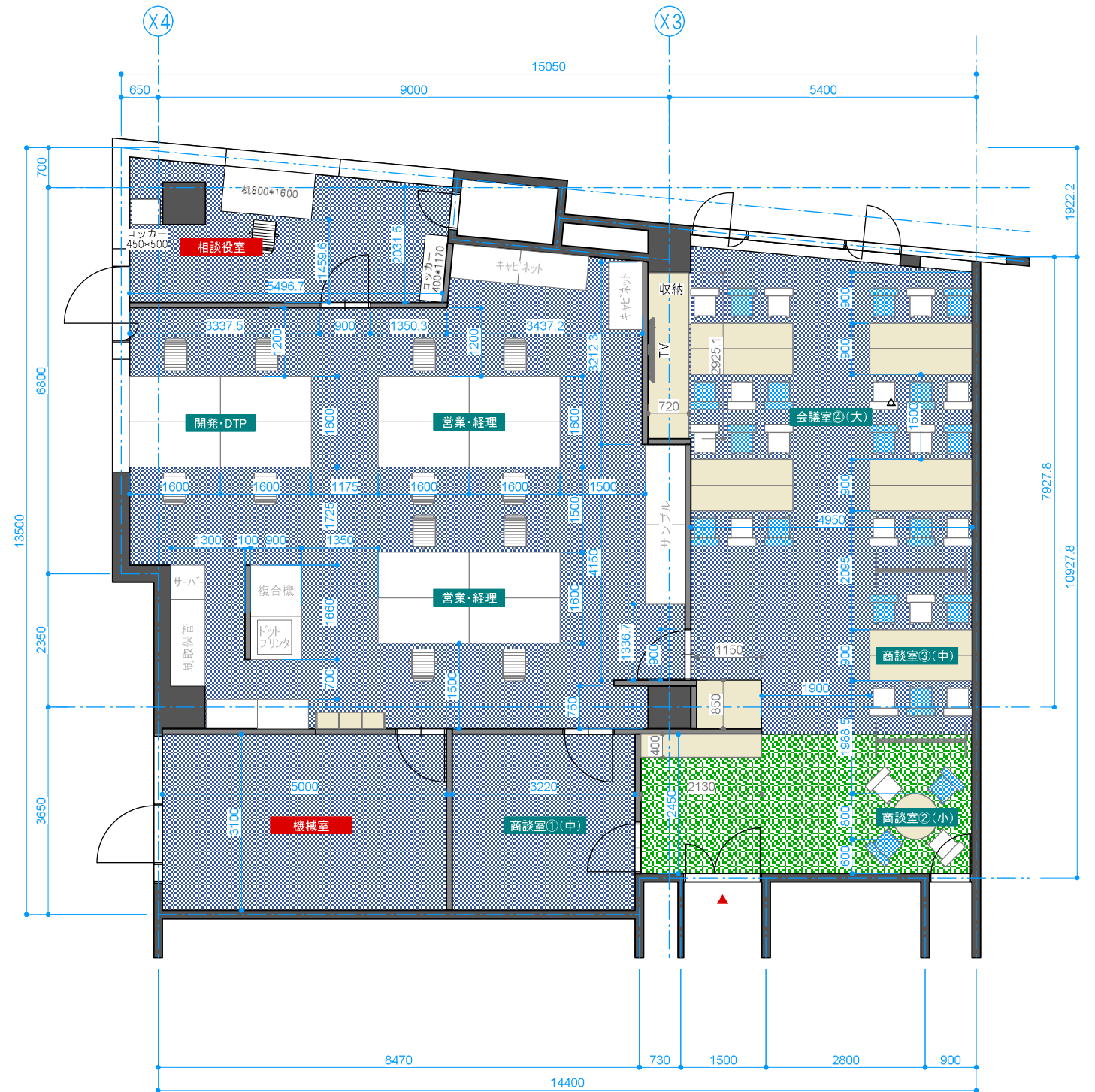
Osaka miyajima-ku katamachi

2019 . 07 . 19

plan B



既存プラン



既存プラン

Data.	Project.	研美社 オフィスプラン	Sheet size.	A3	No.	A002	Drafted.	Morii . Y	<input checked="" type="checkbox"/> Osaka Office 1-19-29 Nishitanabe abeno-ku Osaka 545-0014 Japan T 06 6806 7793 F 06 6806 7797
	Title.	プランニング	Scale.	1/100	Date.	2019 . 07 . 19	<input type="checkbox"/> Tokyo Office 5-1-45 Hiroo shibuya-ku Tokyo 150-0012 Japan T 03 6432 5688 F 03 6432 5622	DIGWORKS22 design support Morii architect association.	